

A watercolor-style background in shades of blue and cyan, with irregular, soft edges. The text is centered on this background.

GCSE 2024 Exhibition



3D Design

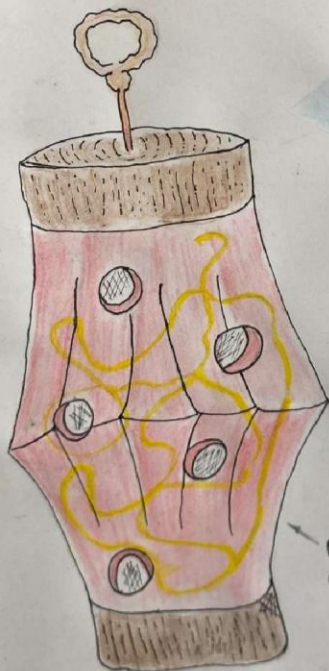


Lighting

x3



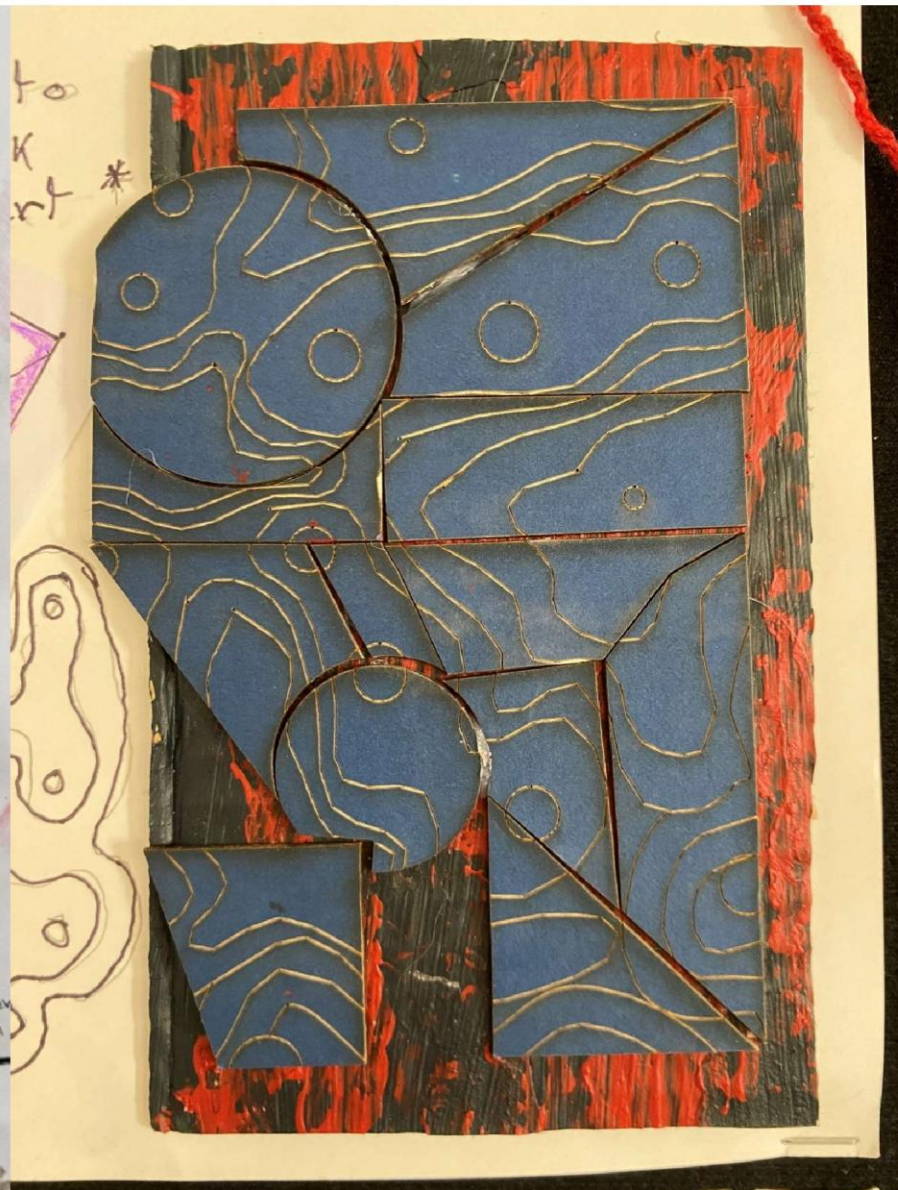
You can recycle a pipe to make a lantern machine structure, this is the top half and the bottom half.



Plastic or fabric to make this lantern.



*The lead on the back of the crane.
Lead strips and fern over the paper crane and









Sampling - Cardboard/Plastic



made from plastic. I carefully designed each one a unique design. I roughly got each bottle shape
I stuck them all on this sheet.



all different sizes and shapes. Some of these were cut out using
the hot glue gun.

Design Sampling

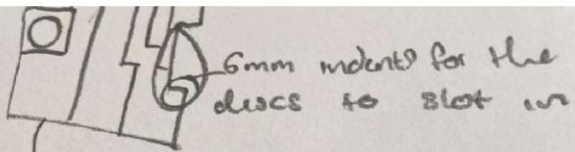
This was a mini chessboard that I had to cut down so it would fit. I made it as it would allow me to experiment and find an efficient way to make my actual piece.

It gave me the idea of using duct tape to paint it.



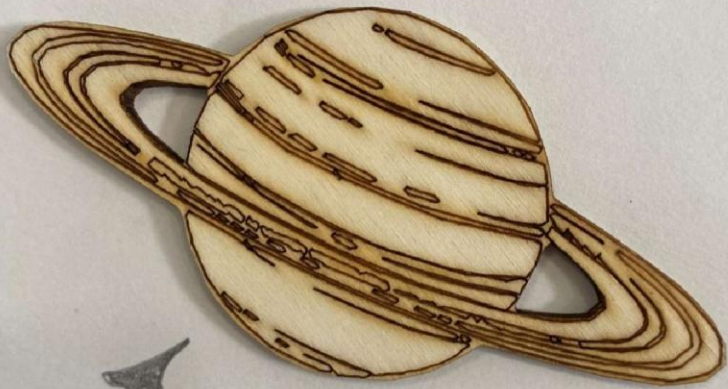
This was a holder made out of toilet paper tubes. It was made as an idea of making a holder for snakes & ladders using old/recycled materials. I used a hot glue gun and a great saw to make it.

These are also chess pieces. I also used them. They are prototypes.



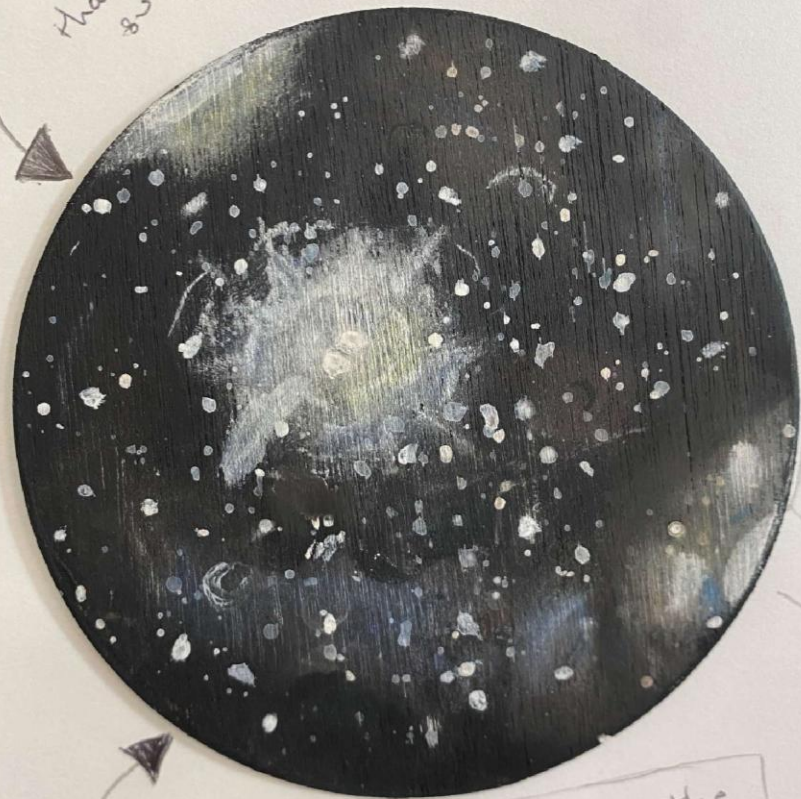
6mm indented for the discs to slot in

use the laser cutter to engrave little spaceship-themed design



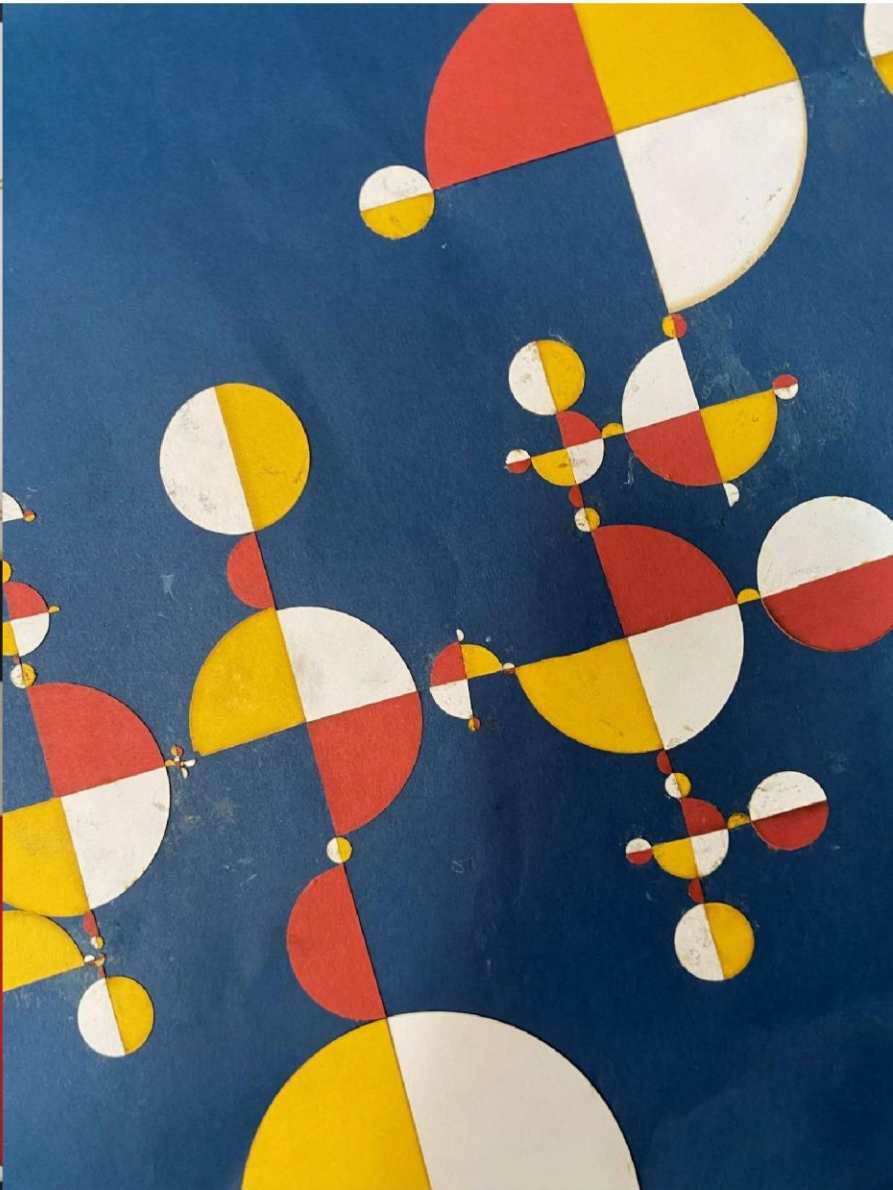
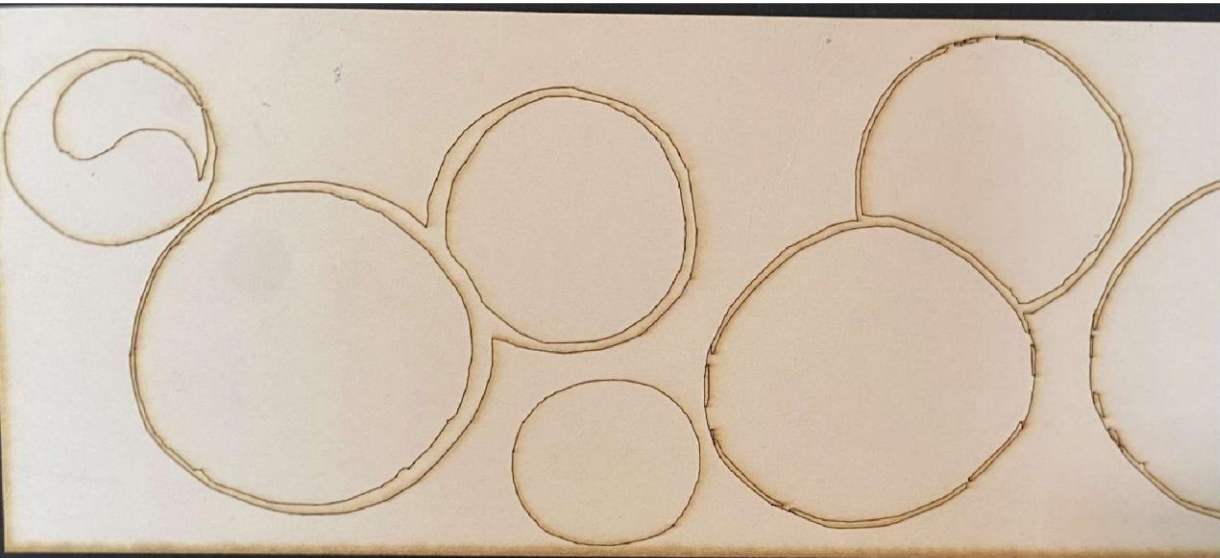
This small bit would be there so that the lid stays on top of the box and doesn't move.

After making that I thought that it could suffice as a coaster.



This artist copy was from the 1st artist that I chose called Ash

artist replica of space





of these the most
re they are just the
visually interesting.

cartons that have been
cut into thin strips. I messed
about with them and made
a little circle by soldering them.

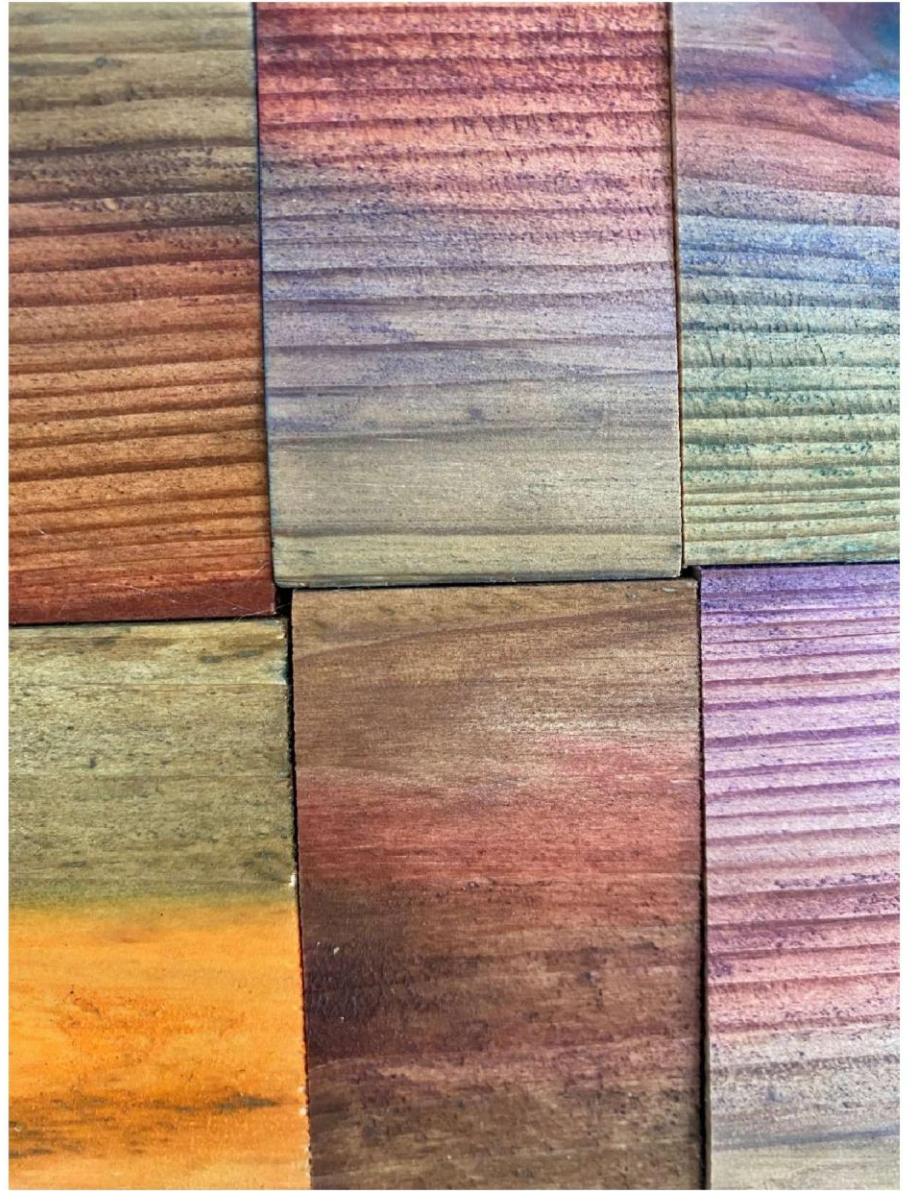


For this one, I wanted to
try something out of wood
so I opted to try laser
cutting with soap.
I found a nice design and
vectorised it and selected the
colours. I wanted to see how
the material works and if I would use
it.

only
is
ly,
& clear,
it,
h that
rough
nd
o
lear



For this part, I tried painting
wood to see how it looked.
I think it could be cool but
strays a bit too far from the theme
I'm also not sure how I would use it.





SPRING

Equipment I Used:

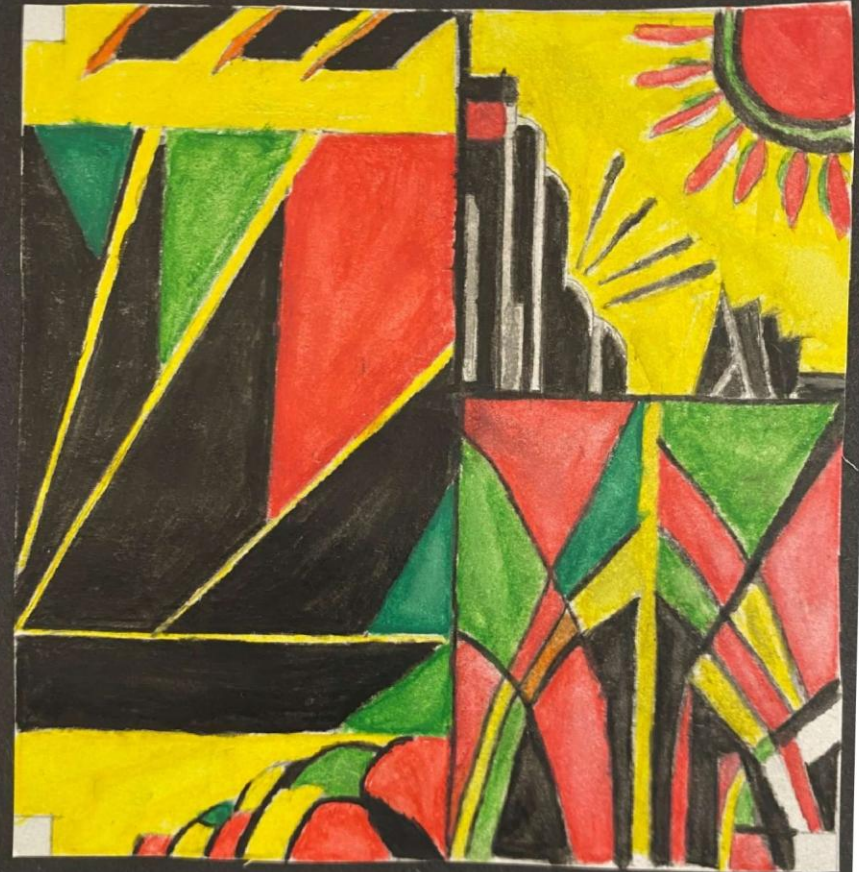
- Paper
- Coloured pencils
- felt tips
- metal wire
- marking tape
- hot glue
- Laser Cutter
- 3D design software

used laser-cut papers. Coloured were coloured sharp object read the piece make the right I wire with marking leaves

signs for the leaves such as brown on the left which are realistic, however it is and tedious because the same as the leaves were on the metal wire

W W W:
the leaves turned out bright and vibrant the leaves fit with the metal wire more around. the finished piece came out the leaves were higher and a better

E B I:
the spirals on the leaves stood out more. the more closer together so the metal wire went



Characterized by bold and precise geometric shapes along with strong colors. Commonly used in household items and architecture.







