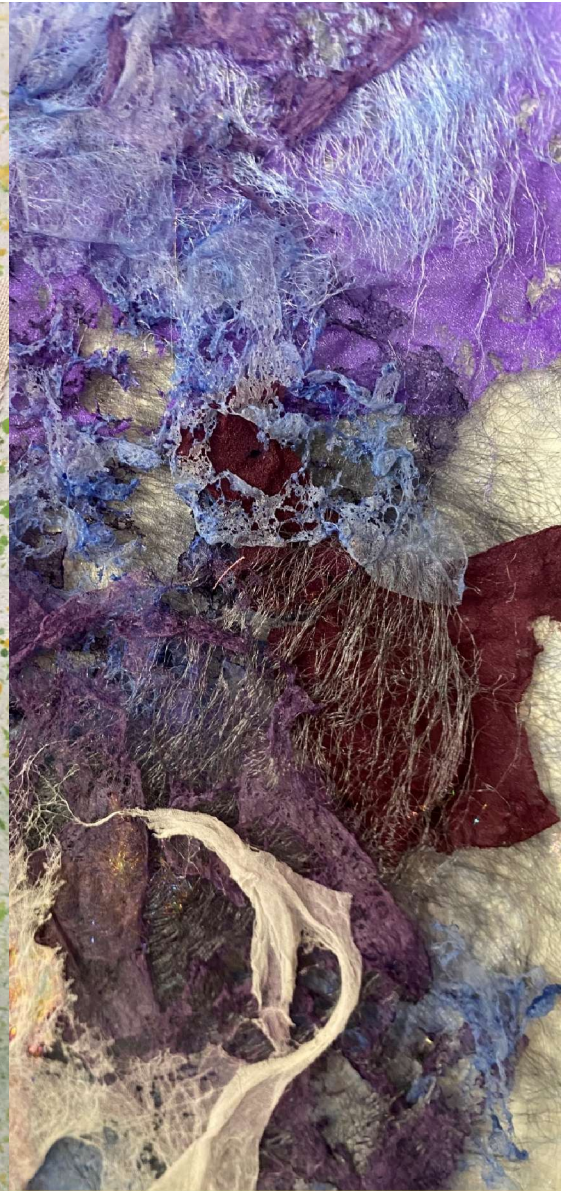
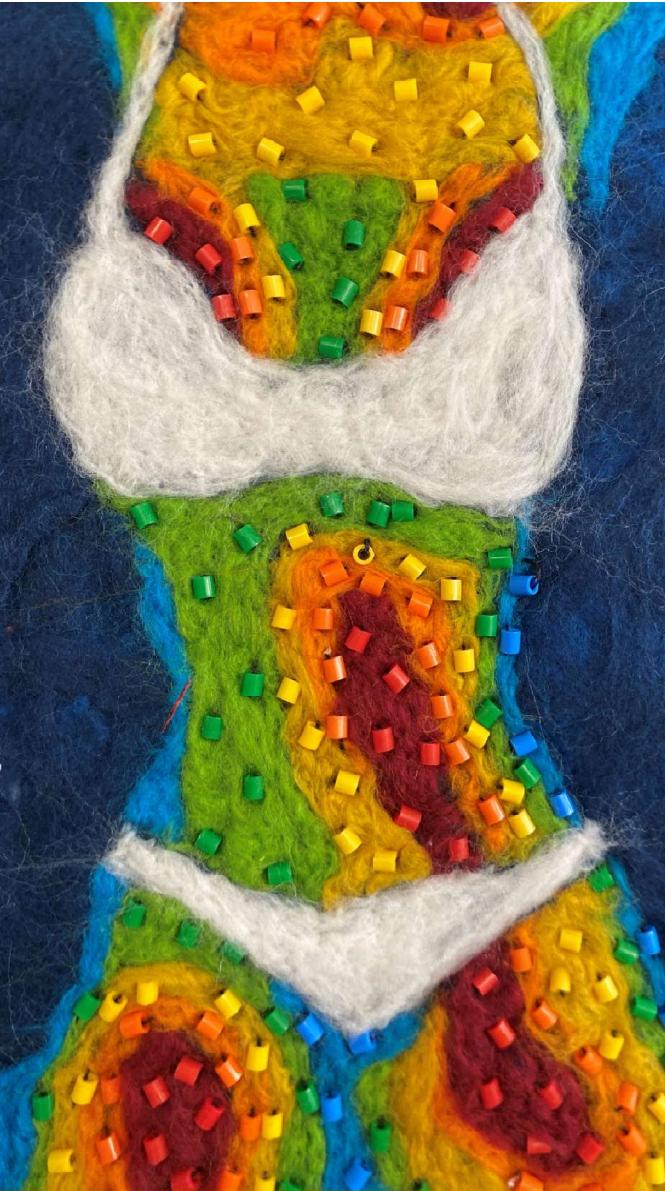


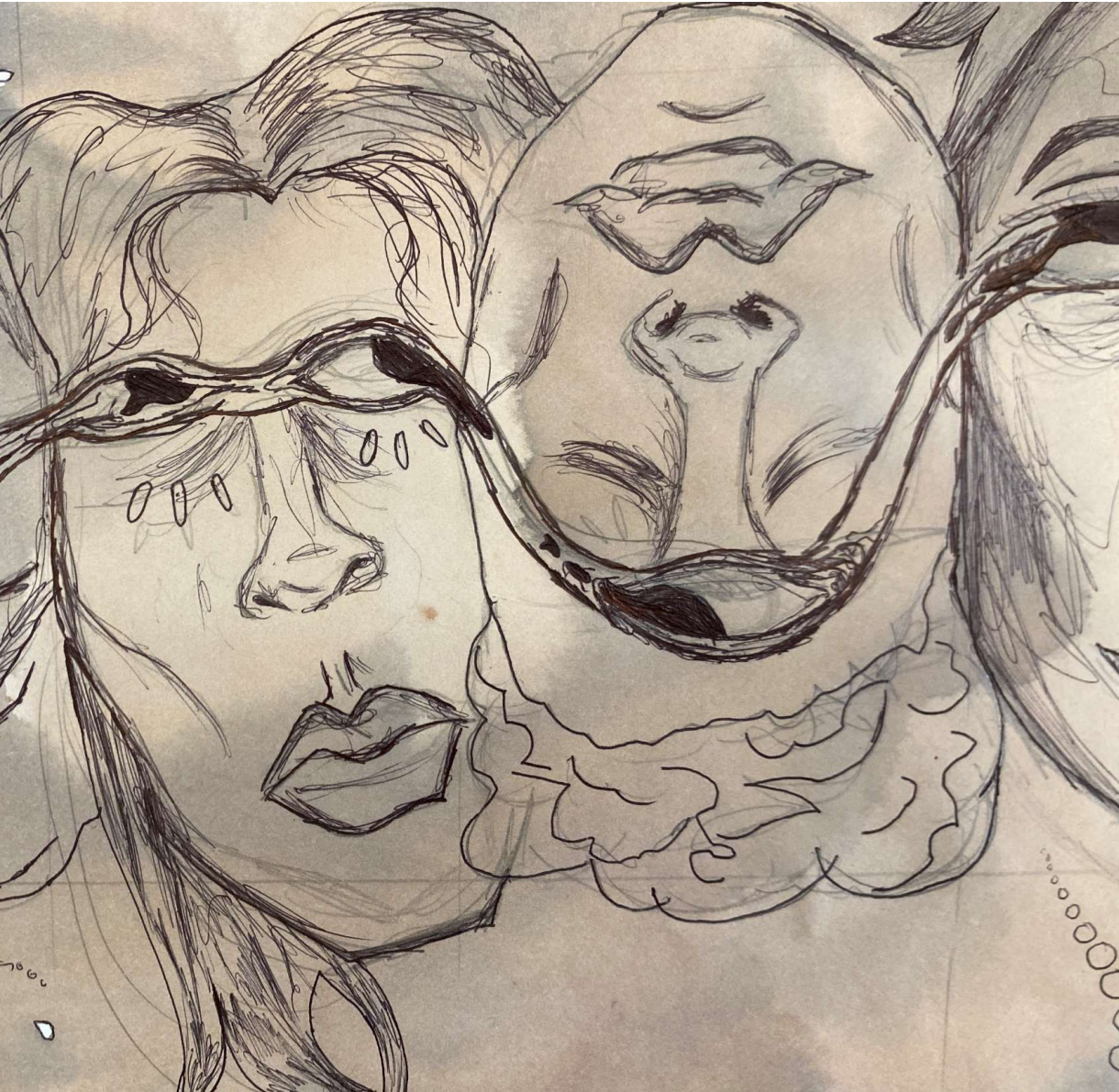
A large, irregular watercolor splash in shades of blue and cyan serves as the background for the text. The splash is centered on the page and has a soft, painterly texture.

GCSE 2024 Exhibition

A large, irregular watercolor splash in various shades of blue, ranging from light sky blue to deep cerulean, serves as the background for the text. The edges of the splash are soft and feathered, blending into the white background.

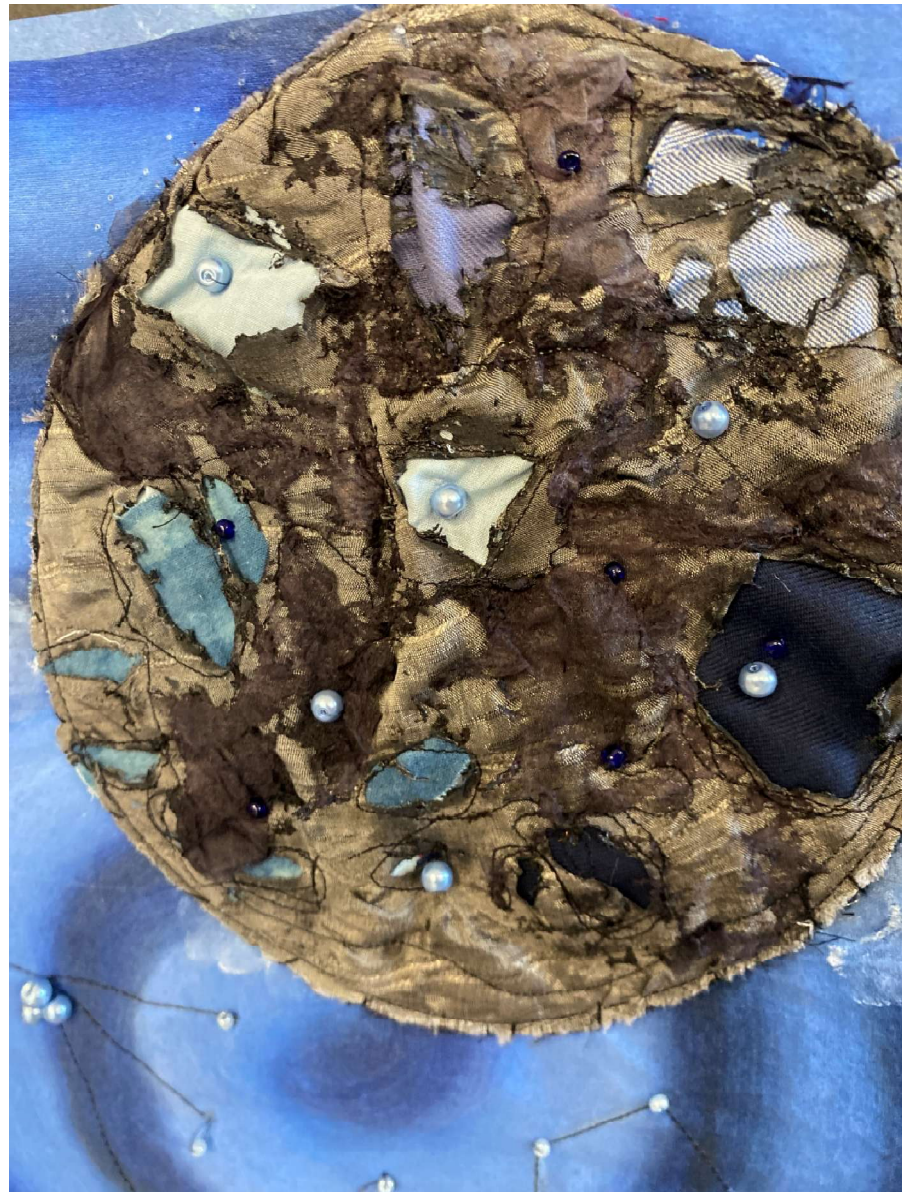
Textiles

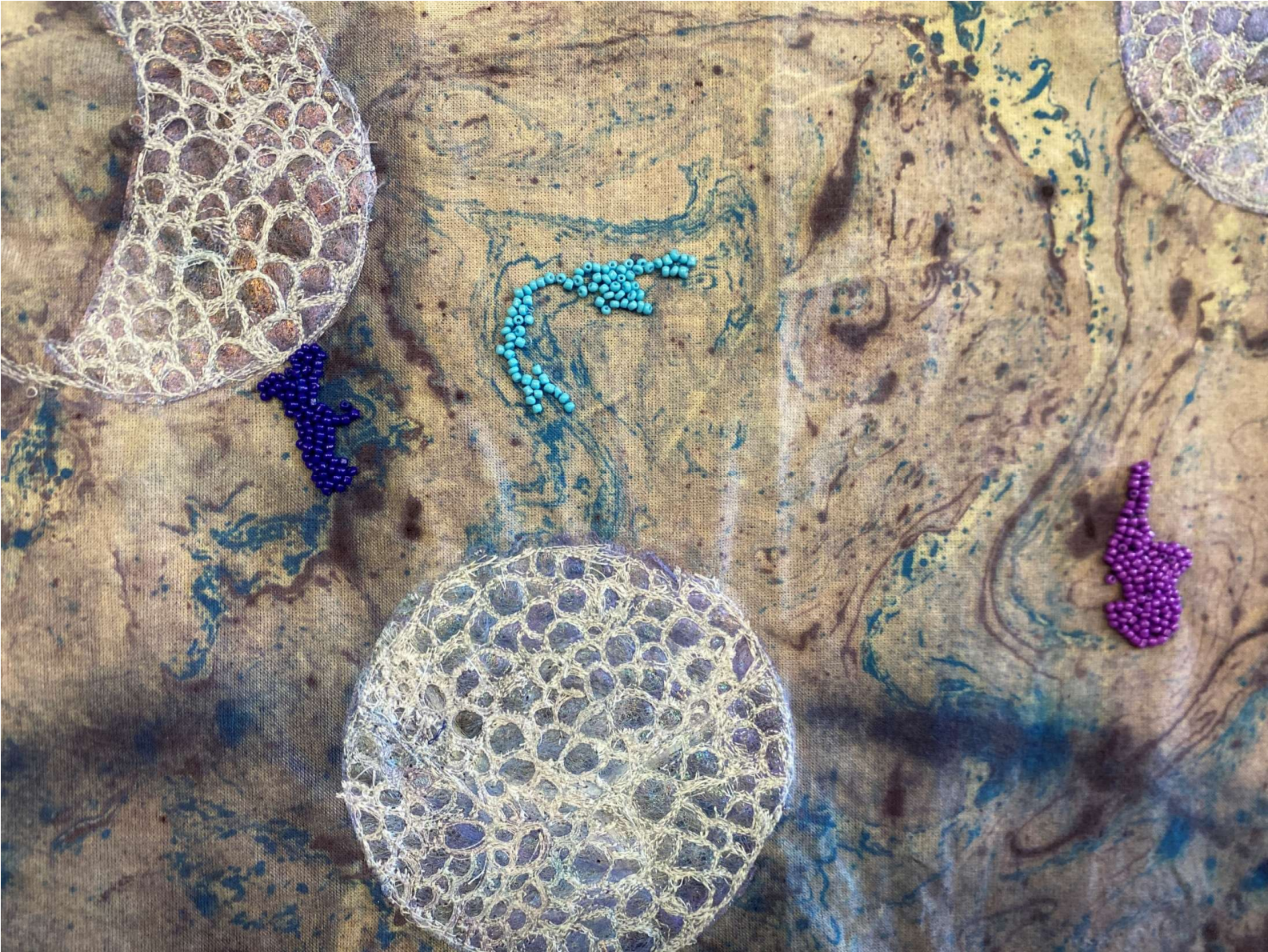
















On this page there
ball which was ma
on which I covered
make it more like s
it would be better
colour ad more pla
colour mostly as it
earth vibe.

On this page there is wet felting to ma
this I laid out some wool on top of one
another than I had to use water and so
on top of it after than I used plastic on
top to cover it after than I had to roll or
top it with roller for long time after if ge
stuck to one another I had to wash it w
warm water after I finished making it I
circle to make it look like planet . I
mostly enjoyed making the whole piece
but even better if I used more different
colour to make it more realistic.

Wet felting







ALADDIN SANE

One of David Bowie's most iconic looks is notably "Aladdin Sane" and so I knew I had to replicate it somehow. First, I decided to bead over it and I really liked this observation turned out. I began by collecting an assortment of transparent red and deep orange beads to almost gradient into each other and, using a needle thread for easier concealment, the top of an image transfer of I chose to make bead pop on the face, I

beaded over his face. Keep the B&W the more layer highlighted the

lightning bolt with opaque red beads top.

I gathered my blue beads and repeated this process. As for my primary resource, I went to one of her makeup courses, sticking with Aladdin. Using my friend as a model, across her face where the bolt

