

Limehurst Academy

KS4

Options Booklet



A Specialist Sports College

Contents

Introduction	3
Core Curriculum	4
Pathways	5-7
 Core Subjects	
English Language and Literature	9
Maths	10
Combined Science / Separate Science	11-12
 Options Choices	
Geography	14
History	15
French / Spanish	16
Art	17
Textiles	18
Hospitality and Catering	19
Sports Studies	20
Music	21
Drama	22
ICT	23
Computer Science	24
Citizenship	25
Health and Social Care	26

Introduction

Since you started at Limehurst, you have taken a wide range of subjects and have had opportunities to learn in a variety of ways. It is now time to consider the next stage in your school career.

In the Autumn Term, you will begin courses that lead directly to GCSE (or equivalent qualifications) at the end of Year 11. This means that you will study slightly fewer subjects, but in greater depth. You will continue to study core subjects, but you will also have to decide which other subjects you wish to continue to study.

The purpose of this booklet is to explain the courses available — both core and as options — and it will help you and your parents to make informed choices about what type of course and which subjects best suit you.

Think about your choice of subjects carefully as the decisions you make now may be influenced by what you intend to do in the future. Remember, when you finish your learning at Limehurst, you will be making more choices about sixth form, college or apprenticeships.

We are offering you a curriculum in Years 10 and 11 which is relevant to your needs, both now and in the future.

Courses are arranged in such a way as to meet two other general aims:

1. To provide a broad and balanced education which keeps your career and further education options open for as long as possible.

and;

2. To give you the chance to follow your individual interests and develop your own particular abilities, both inside and outside the classroom.

Think carefully about your choices. Talk to your teachers about what each course offers. Think about what will be best for you and what you would like to be learning about.

Core Curriculum

This is the part of the curriculum that you **do not** choose.

All students study the following courses at Key Stage Four:

English

All pupils will study GCSEs in English Literature and English Language. **Maths**

All pupils will study GCSE Maths.

Science

There are two routes in Science. You may take Combined Science (worth two GCSEs) or Separate Sciences consisting of three GCSEs: Biology, Chemistry and Physics.

We recommend that students wishing to study Separate Sciences should be at least 'Secure' in their Current Outcome Marker in **Maths and Science**. Students wishing to study Separate Sciences need to be on Pathway A and will choose this as one of their option choices, and should talk to their Science Teacher before making this choice.

PE

All students will take part in one lesson of PE a week. Students wishing to take a qualification in PE can also choose this as one of their options.

Personal Development

All students will study PSHE, Citizenship, RE and Careers Education for one hour a week. These lessons enable the development of important skills and help students to gain confidence in preparation for their future life and the next stage of education. Students who wish to take a GCSE in Citizenship can choose this as one of their options.

Pathway A

Pathway A – Nine qualifications.



On this route you will choose one of:

French or Spanish

And either:

History or Geography

You will then choose two more options, plus two reserve choices from the following:

Art	Geography	ICT	Separate Sciences *
Health and Social Care	History	Drama	Computer Science **
Hospitality and Catering	French	Sports Studies	Music
Textiles	Spanish	Citizenship	

*Students choosing Separate Sciences need to have a COM of 'Secure' or 'Stretch' in both Maths and Science.

**Students choosing Computer Science need to have a COM of 'Secure' or 'Stretch' in both Maths and ICT

Pathway B

Pathway B – Eight qualifications, plus additional lessons in English, Maths and Science each week



You can choose:

French or Spanish **or**

Geography or History

You will then choose two more options, plus two reserve choices from the following:

Art	Geography	ICT
Health and Social Care	History	Drama
Hospitality and Catering	French	Sports Studies
Textiles	Spanish	Citizenship

How do I make my choices?

When making your choices it is really important to:

- Consider the subjects you enjoy and are good at.
- Find out about the courses on offer.
- Discuss your choices with as many adults as you can; they can advise and support you. Your parents, subject teachers, form tutor and Head of Year are all willing and able to help.

In your Personal Development lessons you will be spending time going through the option process and will have lots of opportunities to consider all the possible choices you need to make.

When you, your parents and your teachers are satisfied you have understood what you want to choose then you will complete an **online** option form. **The link for this will be sent to your parents in March.**

**All option forms must be completed by
TBC**

**Please make sure that you complete all of the form and that
you have two reserve choices.**

**Once you have made your choices you will have the
opportunity to review them in the Summer Term – but you
may not be able to change them.**

**No changes can be made to options choices beyond
the end of September of Year 10**

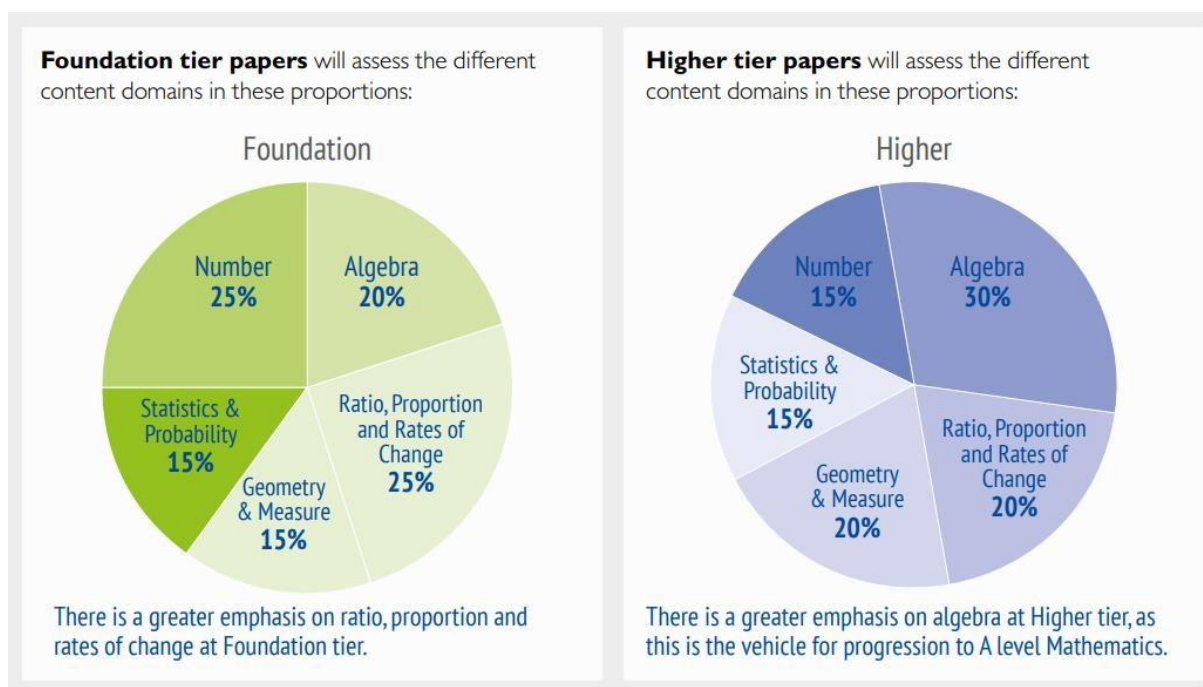
Core Qualifications

These are the subjects
you have to study



English Language and Literature																				
Qualification: Two GCSEs		Exam Board: AQA (Language) Edexcel (Literature)																		
English Language <ul style="list-style-type: none"> How to read and analyse fiction and non-fiction texts. How to write imaginative and transactional texts for different audiences and purposes. How to develop speaking and listening skills. 																				
English Literature <ul style="list-style-type: none"> How to analyse texts looking at the writer's craft. How to interpret texts considering historical and authorial context The Literature texts you will study are: Animal Farm, Macbeth, A Christmas Carol. Selected poems from an anthology. 																				
Assessment: 100% examination at the end of the course. <ul style="list-style-type: none"> English Language – Paper 1: Fiction and Imaginative Writing – 50% of overall mark – 1 hour 45 mins English Language – Paper 2: Non-fiction and Transactional Writing – 50% of overall mark – 1 hour 45 mins English Literature – Paper 1: Shakespeare and Post 1914 Literature – 1 hour 45 mins English Literature – Paper 2: 19th Century Novel and Poetry since 1789 – 2 hours 15 mins 																				
Some of the careers that use English: <table> <tr> <td>Actor</td><td>Digital marketing officer</td><td>Radio broadcast assistant</td></tr> <tr> <td>Advertising copywriter</td><td>Early years teacher</td><td>Sales administrator</td></tr> <tr> <td>Arts administrator</td><td>Librarian</td><td>Screenwriter</td></tr> <tr> <td>Commissioning editor</td><td>Marketing executive</td><td>Teacher</td></tr> <tr> <td>Computer games developer</td><td>Newspaper journalist</td><td>Speech and language therapist</td></tr> <tr> <td>Crown prosecutor</td><td>Paralegal</td><td>Vlogger</td></tr> </table>			Actor	Digital marketing officer	Radio broadcast assistant	Advertising copywriter	Early years teacher	Sales administrator	Arts administrator	Librarian	Screenwriter	Commissioning editor	Marketing executive	Teacher	Computer games developer	Newspaper journalist	Speech and language therapist	Crown prosecutor	Paralegal	Vlogger
Actor	Digital marketing officer	Radio broadcast assistant																		
Advertising copywriter	Early years teacher	Sales administrator																		
Arts administrator	Librarian	Screenwriter																		
Commissioning editor	Marketing executive	Teacher																		
Computer games developer	Newspaper journalist	Speech and language therapist																		
Crown prosecutor	Paralegal	Vlogger																		

Maths		
Exam Board: <u>AQA</u>		Exam Board: AQA
You will study: <ul style="list-style-type: none">• Number: between 15-25% of the assessment.• Ratio, Proportion and Rates of Change: between 20-25% of the assessment.• Algebra: between 20-30% of the assessment.• Geometry and Measure: between 15-20% of the assessment.• Statistics and Probability: 15% of the assessment.		
Assessment: <p>100% examination at the end of the course.</p> <p>Paper 1: non-calculator – 33 1/3 % of overall mark - 1 hour 30 mins</p> <p>Paper 2: calculator – 33 1/3 % of overall mark - 1 hour 30 mins</p> <p>Paper 3: calculator - 33 1/3 % of overall mark - 1 hour 30 mins</p>		
Some of the careers that use Maths:		
Accountant	Credit controller	Software designer
Acoustics consultant	Criminologist	Stockbroker
Actuary	Data analyst	Tax advisor
Aerospace engineer	Electrical engineer	Teacher
Air traffic controller	Financial advisor	
Bank manager	Meteorologist	
Civil engineer	Research scientist	



Combined Science / Separate Sciences	
Qualification: Two or three GCSEs Foundation Tier: Grades 1-5 Higher Tier: Grades 4-9	Exam Board: Edexcel (<u>Combined Science</u> and <u>Biology</u> , <u>Chemistry</u> and <u>Physics</u>)
Biology (Separate Science)	
<u>Paper 1</u> <ul style="list-style-type: none"> Overarching concepts in Biology Cells and control Genetics Natural selection and genetic modification Health, disease and development of medicines 	<u>Paper 2</u> <ul style="list-style-type: none"> Overarching concepts in Biology Plant structures and their functions Animal coordination, control and homeostasis Exchange and transport in animals Ecosystems and material cycles
Chemistry (Separate Science)	
<u>Paper 1</u> <ul style="list-style-type: none"> Overarching concepts in Chemistry States of matter Methods of separating and purifying substances Acids Obtaining and using metals Electrolyte processes Reversible reactions and equilibria Transition metals, alloys and corrosion* Quantitative analysis* Dynamic equilibria calculations* Chemical cells and fuel cells* 	<u>Paper 2</u> <ul style="list-style-type: none"> Overarching concepts in Chemistry Group 1, 7 and 0 Rates of reaction Fuels Heat energy changes in chemical reactions Earth and atmosphere science Qualitative analysis tests for ions* Hydrocarbons* Polymers* Alcohols and carboxylic acids* Bulk and surface properties of matter including nanoparticles*
Physics (Separate Science)	
<u>Paper 1</u> <ul style="list-style-type: none"> Overarching concepts in Physics Waves Light and the electromagnetic spectrum Particle module 1 Radioactivity Astronomy* 	<u>Paper 2</u> <ul style="list-style-type: none"> Overarching concepts in Physics Energy – forces doing work Forces and their effects Electricity and circuits Static electricity* Magnetism and the motor effect Electromagnetic induction Particle module 2 Forces and matter
*Only applies to Separate Sciences	
Assessment: 100% examination at the end of the course.	

Combined Science:		
Biology 1 – 1 hour 10 mins Chemistry 1 – 1 hour 10 mins Physics 1 – 1 hour 10 mins	Biology 2 - 1 hour 10 mins Chemistry 2 - 1 hour 10 mins Physics 2 - 1 hour 10 mins	
Separate Sciences:		
Biology 1 - 1 hour 45 mins Chemistry 1- 1 hour 45 mins Physics 1- 1 hour 45 mins	Biology 2- 1 hour 45 mins Chemistry 2- 1 hour 45 mins Physics 2- 1 hour 45 mins	
Some of the careers that use Biology:		
Biomedical scientist Botanist Criminologist Dental nurse Environmental consultant Food scientist Gardener GP	Health visitor Horticultural manager Hospital doctor Microbiologist Nurse Oceanographer Pharmacologist Podiatrist	Speech and language therapist Teacher Vet Zookeeper Zoologist
Some of the careers that use Chemistry:		
Anaesthetist Forensic scientist Chemical engineer Chemist GP Oil rig worker Criminologist Hospital doctor Dentist Laboratory technician Energy engineer Materials Food scientist Minerals	Nanotechnologist Geotechnician Nurse Pharmacist Teacher engineer Textile technologist surveyor Vet	
Some of the careers that use Physics:		
Acoustics consultant Aerospace engineer Architect Broadcast engineer Civil engineer Criminologist	Design and development engineer Electronics engineer Geoscientist IT service engineer Meteorologist Nanotechnologist Nuclear engineer	Oil and gas operations manager Physicist Teacher

Option Choices

These are subjects you
can choose to study



A Specialist Sports College

Geography		
Qualification: GCSE		Exam Board: AQA
<p>You will study:</p> <p>Paper 1</p> <ul style="list-style-type: none"> • The challenge of natural hazards • The living world • Physical landscapes in the UK <p>Paper 2</p> <ul style="list-style-type: none"> • Urban issues and challenges • The changing economic world • The challenge of resource management <p>Paper 3</p> <ul style="list-style-type: none"> • Issue Evaluation • Fieldwork (including two compulsory field trips) 		
<p>Assessment:</p> <p>Three examinations at the end of the course.</p> <p>Paper 1: <i>Living with the Physical Environment</i>. 1 hour 30 mins. (35%)</p> <p>Paper 2: <i>Challenges in the Human Environment</i>. 1 hour 30 mins. (35%)</p> <p>Paper 3: <i>Geographical Application and Skills</i>. 1 hour 15 mins. (30%)</p>		
Some of the careers that use Geography:		
Air cabin crew Archaeologist Cartographer Countryside ranger Diplomatic service officer Drone Pilot Ecologist	Environmental consultant Estates officer Geoscientist Land surveyor Landscape architect Planning and development surveyor	Quantity surveyor Rural surveyor Teacher Tourist guide Town planner Transport planner Travel agent

History		
Qualification: GCSE		Exam Board: <u>Eduqas</u>
You will study: <ul style="list-style-type: none"> America 1910 - 1929 Germany 1919 - 1990 Crime and Punishment 500 - Present Day Elizabethan Era 1558 – 1603 		
Assessment: Four examinations at the end of the course. Papers 1 and 2 are taken on one day and Papers 3 and 4 on another day. Paper 1: America 1910-1929 (25%) 1 hour and Paper 2: Elizabethan Era (25%) 1 hour. Paper 3: Germany 1919-1990 (25%) 45 minutes and Paper 4: Crime and Punishment (25%) 1 hour 15 minutes.		
Some of the careers that use History:		
Archaeologist Archivist Art gallery curator Broadcast journalist Conservator Editorial assistant	Land and property valuer Librarian Museum curator Proof-reader Public relations officer Solicitor	Sub-editor Teacher Tourist guide Web content manager Writer

French / Spanish		
Qualification: GCSE Foundation Tier: Grades 1-5 Higher Tier: Grades 4-9		Exam Board: Edexcel (French and Spanish)
<p>You will study a range of content, which includes:</p> <ul style="list-style-type: none"> • Your Personal World: Including family, friends, relationships and equality. • Media and Technology: Including social media and gaming, television and films. • Lifestyle and Wellbeing: Including food and drink, sports, physical and mental wellbeing. • Travel and Tourism: Including holidays, accommodation and tourist attractions. • Your Neighbourhood: Including places in town, shopping and transport. • Wider World Issues: The natural world and environmental issues. • School life: Including your life at primary and secondary school. • Your Future Plans: Including future education, future opportunities, work and travel. 		
<p>Assessment:</p> <ul style="list-style-type: none"> • Students will be assessed in the 4 key skills. • Each examination makes up 25% of the total marks. • The examination papers are tiered Foundation (F) and Higher (H). <p>The examinations are:</p> <p>Speaking F: 7-9 mins OR H: 10-12 mins (15 minutes preparation for both tiers)</p> <p>Listening F: 45 mins OR H: 1 hour</p> <p>Reading F: 45 mins OR H: 1 hour</p> <p>Writing F: 1 hour 15 mins OR H: 1 hour 20 mins</p>		
Some of the careers which use Languages:		
Air cabin crew Air traffic controller Airline pilot Broadcast journalist Events manager Hotel manager	Immigration officer Public relations office RAF officer Teacher Tour manager Tourist guide	Translator Transport planner Banking and Finance IT Marketing Engineering

Art		
If you choose Art, you <u>cannot</u> choose Textiles or 3D Design		
Qualification: GCSE		Exam Board: <u>OCR</u>
<p>You will study:</p> <ul style="list-style-type: none"> • How to use historical, cultural, and contemporary research into craftspersons, artists, and designers to give deeper meaning to your work • How to develop creative and unique ideas • How to use a wide range of Fine Art media, techniques, and processes to explore and experiment including painting, mono-Printing, and drawing • How to plan for and create personal outcomes • How to be an independent creative of the future! 		
<p>Assessment:</p> <ul style="list-style-type: none"> • Projects run just like KS3 in structure (using four Assessment Objectives which allow you to showcase your skills across a broad range) you will undertake similar tasks, but with very different themes that you have chosen yourself! • The course is 100% NEA (work you do in a supervised environment – which could be in your classroom or, for example, on a field trip). • The course is split into two parts – Unit 1: Portfolio (a project developed by yourself worth 60% of your GCSE) Unit 2: Externally Set Task (a project developed from the exam board list of themes worth 40% of your GCSE) • At the end of Unit 2 you will have a 10 hour practical exam period (split over two days) to create your final piece (there will also be mock exams to make sure you are super-prepared!) 		
Some of the careers that use Art:		
Advertising art director Animator Architect Art gallery curator Art therapist Fashion designer	Graphic designer Landscape Make-up artist Museum curator Photographic stylist Play therapist	Prop maker Set designer Teacher TV or film director Visual merchandiser Web content manager

Textiles		
If you choose Textiles, you <u>cannot</u> choose Art or 3D Design		
Qualification: GCSE		Exam Board: <u>OCR</u>
You will study: <ul style="list-style-type: none">• How to use historical, cultural, and contemporary research into craftspersons, artists, and designers to give deeper meaning to your work• How to develop creative and unique ideas• How to use a wide range of Textiles media, techniques, and processes to explore and experiment• How to plan for and create personal outcomes• How to be an independent creative of the future!		
Assessment: <ul style="list-style-type: none">• Projects run just like KS3 in structure (using four Assessment Objectives which allow you to• showcase your skills across a broad range) you will undertake similar tasks, but with very different themes that you have chosen yourself!• The course is 100% NEA (work you do in a supervised environment – which could be in your classroom or, for example, on a field trip).• The course is split into two parts – Unit 1: Portfolio (a project developed by yourself worth 60% of your GCSE) Unit 2: Externally Set Task (a project developed from the exam board list worth 40% of your GCSE).• At the end of Unit 2 you will have a 10 hour period (split over two days) to create your final piece (there will also be mock exams to make sure you are super-prepared!)		
Some of the careers that use Textiles:		
Advertising art director Art editor Clothing alteration specialist Conservator Costume designer Industry Inspector	Design and development engineer Fashion designer Footwear designer Furniture designer Image consultant Interior design Stage and Set Design	Jewellery designer Magazine journalist Retail buyer Teacher Textiles Technologist Material Innovation

Level 1/2 Hospitality and Catering		
Qualification: Vocational Award		Exam Board: WJEC
<p>You will study:</p> <ul style="list-style-type: none"> Unit 1 – The Hospitality and Catering Industry: Types of providers, legislation, food safety and the roles and responsibilities within the sector. Unit 2 – Hospitality and Catering in Action: Develop practical skills through planning, preparing, and cooking nutritional dishes that meet clients' needs. <p>Required resources for this course:</p> <ul style="list-style-type: none"> You will be expected to provide your own ingredients for practical lessons. 		
<p>Assessment:</p> <ul style="list-style-type: none"> Unit 1 – The Hospitality and Catering Industry 90 minutes written exam (Worth 40% of the qualification) Unit 2 – Hospitality and Catering in Action Assessed through an NEA project (non-exam assessment) You will plan, prepare, cook, and present two dishes with accompaniments during a set practical exam (Worth 60% of the qualification) <p>Each unit has been designed to develop knowledge, skills and understanding through tasks that have the characteristics of real work in the sector.</p> <ul style="list-style-type: none"> Students will be graded as a level 1/2 Pass, Merit or Distinction. 		
<p>Hospitality and Catering roles make up one of the largest industries in the UK. Just a few career opportunities in this industry are listed below:</p>		
Baker Barista Butcher Catering manager Chef Consumer scientist Counter service assistants	Cruise ship steward Events coordinator Food factory worker Food manufacturing inspector Food safety officer Food scientist Hotel manager	Kitchen porter Mobile caterer Nutritional therapist Personal Chef Product Development Restaurant manager Waiting staff Wedding planner

Sports Studies		
Qualification: Cambridge National Sports Science Level 1/2		Exam Board: OCR
<p>You will study:</p> <p><u>Contemporary Issues in Sport</u></p> <ul style="list-style-type: none"> - Issues which affect participation in sport - The role of sport in promoting values - The implications of hosting a major sporting event - The role National Governing Bodies (NGBs) play in developing their sports - The use a technology in sport <p><u>Performance and Leadership in Sports Activities</u></p> <ul style="list-style-type: none"> - Demonstrating key components (skills and techniques) in two sports - Applying practice methods to support improvement in your own sports performance. - Organising and planning your own sports session - Leading your own sports session - Evaluating your sports session <p><u>Increasing the Awareness of Outdoor Adventurous Activities (OAA)</u></p> <ul style="list-style-type: none"> - The different types of OAA and where we can do them - Equipment, clothing and safety aspects of taking part in OAA - Plan and take part in OAA - Evaluate your participation in OAA 		
<p>Assessment:</p> <ul style="list-style-type: none"> - Performance and Leadership in Sports Activities Internally assessed task [NEA] (Worth 40%) - Increasing the Awareness of Outdoor Adventurous Activities Internally assessed task [NEA] (Worth 20%) - Contemporary Issues in Sport Exam – [1 hour 15 min] (Worth 40%) 		
Careers that use PE/Sport:		
Events Manager Personal Trainer Sports Commentator Sports Analyst Teacher	Sports Psychologist Sports Coach Leisure Centre Manager Lifeguard Sports Scientist	Outdoor Pursuits instructor Physiotherapist Play Therapist. Sports Development Officer Sports Nutritionist

Music		
If you choose Music, you will study one of these qualifications (the choice of which will be made at a later date)		
Qualification: GCSE		Exam Board: Edexcel
You will study: Unit1: Performing Music Unit 2: Composing Music Unit 3: Music - Appraising		
Assessment: <ul style="list-style-type: none"> Performing - Consisting of a number of ensemble and solo performances. This unit is internally assessed. Composing Music - Two compositions (one free composition and one set by Edexcel) This unit is internally assessed. Music Listening and Appraising - Pupils will study 8 set works. There will be a final written paper at the end of the course lasting 1 hour 45 minutes. The set works are split into 4 Areas of Study. This unit is externally assessed. 		
Qualification: BTEC Tech Award in Music Practice		Exam Board: Edexcel
You will study: Component 1: Exploring Music Products and Styles. Component 2: Music Skills Development Component 3: Responding to a Music Brief		
Assessment: <ul style="list-style-type: none"> Components 1 and 2 are assessed through the completion of Pearson set assignments that are internally assessed and then moderated by Pearson Component 3 is a synoptic assessment that is externally assessed by Pearson. 		
Careers that use Music:		
Session Musician Sound technician Singer Broadcast engineer Community arts worker Instrumentalist	Computer games developer Dancer DJ Events manager Music therapist Talent Scout	Musical instrument maker Singer/songwriter Studio sound engineer Teacher TV / film sound technician Musical production

Drama		
Qualification: GCSE		Exam Board: <u>OCR</u>
<p>You will study:</p> <ul style="list-style-type: none"> • A range of theatrical skills and ways in which to devise from a stimulus. • Two extracts from one play text with the intention of presenting a showcase of these extracts. • Practical exploration and analysis of one play text to answer questions on in a written exam. • Analysis and evaluation of live theatre. 		
<p>Assessment:</p> <p><i>Devising Drama (30%)</i> A non-exam assessment where you devise from a stimulus.</p> <p><i>Presenting and Performing Texts (30%)</i> A non-exam assessment with a visiting examiner to assess performances of monologues, duologues and group pieces.</p> <p><i>Drama: Performance and Response (40%)</i> Exam assessment (1 hour 30 minutes)</p> <p>Performing in front of an audience is a compulsory part of this course. If you choose this option, you need to be confident in this aspect of the subject.</p>		
Careers that use Drama:		
Actor Arts administrator Digital marketing officer Dramatherapist Entertainer	Events manager Image consultant Lighting technician Media researcher Screenwriter	Set designer Social media manager Teacher Tour manager TV / film producer

ICT		
Qualification: Cambridge National Level 1/2		Exam Board: <u>OCR</u>
<p>You will study:</p> <p><u>IT in the Digital world</u></p> <ul style="list-style-type: none"> Principles of human computer interfaces The uses of Internet of Everything and the application of this in everyday life Cyber-security and legislations related to the use of IT systems <p><u>Data Manipulation</u></p> <ul style="list-style-type: none"> Plan and design a spreadsheet solution to meet client requirements Evaluate their solution based on the user requirements. <p><u>Using augmented reality to present information</u></p> <ul style="list-style-type: none"> Learn the purpose, use and types of augmented reality (AR) Develop the skills to be able to design and create an AR model prototype, using a range of tools and techniques 		
<p>Assessment:</p> <p>Data Manipulation using spreadsheets Internally assessed tasks (30%)</p> <p>Using AI to present information Internally assessed tasks (30%)</p> <p>IT in the digital world (40%) Exam assessment (1 hour 30 minutes)</p>		
Careers that use ICT:		
Teacher IT Manager IT Sales assistant Cyber security Analyst Project Manager	IT Support Assistant Database Administrator Web developer Network Administrator Software Engineer	Data Scientist Cloud Engineer Robotics Engineer Computer Hardware Engineer

Computer Science		
Qualification: GCSE (9-1)		Exam Board: <u>OCR</u>
You will study: <ul style="list-style-type: none"> • Systems Architecture • Memory and Storage • Wired and wireless networks • Network topologies, protocols, and layers • System security and System software • Ethical, legal, cultural, and environmental concerns • Algorithms, programming techniques and producing robust programs • Computational logic • Translators and facilities of languages • Data representation • Practical Investigations 		
Assessment: <p>Computer Systems (50%) Exam assessment (1 hour 30 minutes)</p> <p>Computational thinking, algorithms and programming (50%) Exam assessment (1 hour 30 minutes)</p>		
Careers that use Computing		
App developer Automotive engineer Broadcast engineer Business Administrator Computer games developer Criminal intelligence analyst	Cyber intelligence officer Data analyst Electronics engineer Information scientist IT project manager IT service engineer	IT technician Software developer Systems analyst Teacher Web designer Web developer

Citizenship		
Qualification: GCSE		Exam Board: <u>Edexcel</u>
<p>You will study:</p> <p><u>Theme A: Living together in the UK</u></p> <ul style="list-style-type: none"> Community, identity and changing population Political, legal and human rights Discrimination and the law <p><u>Theme B: Democracy at Work in the UK</u></p> <ul style="list-style-type: none"> How we are governed Power and politics How laws are made <p><u>Theme C: How the Law works</u></p> <ul style="list-style-type: none"> The role of the law in our society The Criminal Justice System <p><u>Theme D: Power and Influence</u></p> <ul style="list-style-type: none"> The EU, UN, WTO, Commonwealth and NATO Taking part in democracy The role of the media <p><u>Theme E: Taking a Citizenship Action</u></p> <ul style="list-style-type: none"> Researching an issue, planning and carrying out a campaign 		
<p>Assessment:</p> <ul style="list-style-type: none"> There are 2 exams at the end of the course. Both are 1hr 45 minutes long. They are worth 100% of the GCSE. <p>Students will take part in a Citizenship campaign which is examined in Paper 2</p>		
Careers that use Citizenship:		
Barrister Broadcast journalist Civil service officer Diplomatic service officer Human resources manager	Market researcher MP Newspaper journalist Paralegal Public relations officer	Solicitor Stockbroker Teacher Youth offending team officer

Health and Social Care		
Qualification: Cambridge National Level 1/2		Exam Board <u>OCR</u>
<p>You will study:</p> <ul style="list-style-type: none"> • Principles of care in health and social care settings. • Person-centred values. • Effective communication in health and social care settings. • Protecting service users and service providers in health and social care settings. <p>In doing so, students will develop learning and practical skills that can be applied to real-life contexts and work situations.</p> <p>This course will ask learners to think creatively, innovatively, analytically, logically and critically.</p> <p>Learners will develop independence and confidence in using skills that would be relevant to the health and social care sector and more widely.</p>		
<p>Assessment:</p> <p>The course is assessed through two NEA's and one external exam. Units completed are:</p> <ul style="list-style-type: none"> - RO33: Supporting individuals through life events (60 marks, centre assessed tasks, OCR moderated) - RO34: Creative and Therapeutic Activities (60 marks, centre assessed tasks, OCR moderated) - RO32: Principles of care in health and social care settings (70 marks, written paper, OCR set and marked) 		
Careers that use Health and Social Care:		
<ul style="list-style-type: none"> • Counsellors • Social Worker • Case Worker • National Health Service 	<ul style="list-style-type: none"> • Nurse • Charity Officer • Health Promotion Specialist • Nursery Nurse 	<ul style="list-style-type: none"> • Residential Care • Paramedic
<p>This course could lead to further study relating to a variety of health and social care industries and occupations:</p> <ul style="list-style-type: none"> • Cambridge Technical Health and Social Care • Diploma in Health and Social Care • BTEC Childcare • Counselling 		