

Limehurst Academy

Key Stage Four Options Booklet

2023



A Specialist Sports College

Contents

Introduction	3
Core Curriculum	4
Pathways	5-7
Core Subjects	
English Language and Literature	9
Maths	10
Combined Science / Separate Science	11-12
Options Choices	
Geography	14
History	15
French / Spanish	16
Art	17
Textiles	18
3D Design	19
Food Preparation and Nutrition	20
Physical Education / Sports Studies	21
Music	22
Drama	23
ICT	24
Computer Science	25
Citizenship	26

Introduction

Since you started at Limehurst, you have taken a wide range of subjects and have had opportunities to learn in a variety of ways. It is now time to consider the next stage in your school career.

In the Autumn Term, you will begin courses that lead directly to GCSE (or equivalent qualifications) at the end of Year 11. This means that you will study slightly fewer subjects, but in greater depth. You will continue to study core subjects, but you will also have to decide which other subjects you wish to continue to study.

The purpose of this booklet is to explain the courses available — both core and as options — and it will help you and your parents to make informed choices about what type of course and which subjects best suit you.

Think about your choice of subjects carefully as the decisions you make now may be influenced by what you intend to do in the future. Remember, when you finish your learning at Limehurst, you will be making more choices about sixth form, college or apprenticeships.

We are offering you a curriculum in Years 10 and 11 which is relevant to your needs, both now and in the future.

Courses are arranged in such a way as to meet two other general aims:

1. To provide a broad and balanced education which keeps your career and further education options open for as long as possible.

and;

2. To give you the chance to follow your individual interests and develop your own particular abilities, both inside and outside the classroom.

Think carefully about your choices. Talk to your teachers about what each course offers. Think about what will be best for you and what you would like to be learning about.

Core Curriculum

This is the part of the curriculum that you **do not** choose.

All students study the following courses at Key Stage Four:

English

All pupils will study GCSEs in English Literature and English Language.

Maths

All pupils will study GCSE Maths.

Science

There are two routes in Science. You may take Combined Science (worth two GCSEs) or Separate Sciences consisting of three GCSEs: Biology, Chemistry and Physics.

We recommend that students wishing to study Separate Sciences should be at least 'Secure' in their Current Outcome Marker in **Maths and Science**. Students wishing to study Separate Sciences need to be on Pathway A and will choose this as one of their option choices, and should talk to their Science Teacher before making this choice.

PE

All students will take part in one lesson of PE a week. Students wishing to take a qualification in PE can also choose this as one of their options.

Personal Development

All students will study PSHE, Citizenship, RE and Careers Education for one hour a week. These lessons enable the development of important skills and help students to gain confidence in preparation for their future life and the next stage of education. Students who wish to take a GCSE in Citizenship can choose this as one of their options.

Pathway A



Pathway A – Nine qualifications.

On this route you will choose one of:

French or Spanish

And either:

History or Geography

You will then choose two more options, plus two reserve choices from the following:

Art	Geography	ICT	Separate Sciences *
3D Design	History	Drama	Computer Science **
Food Preparation and Nutrition	French	PE	Music
Textiles	Spanish	Citizenship	

*Students choosing Separate Sciences need to have a COM of 'Secure' or 'Stretch' in both Maths and Science.

**Students choosing Computer Science need to have a COM of 'Secure' or 'Stretch' in both Maths and ICT

Pathway B

Pathway B – Eight qualifications, plus additional lessons in English, Maths and Science each week

You can choose:

French or Spanish

or

Geography or History

You will then choose two more options, plus two reserve choices from the following:

Art	Geography	ICT
3D Design	History	Drama
Food Preparation and Nutrition	French	PE
Textiles	Spanish	Citizenship

****Students choosing Computer Science need to have a COM of 'Secure' or 'Stretch' in both maths and ICT**

How do I make my choices?

When making your choices it is really important to:

- Consider the subjects you enjoy and are good at.
- Find out about the courses on offer.
- Discuss your choices with as many adults as you can; they can advise and support you. Your parents, subject teachers, form tutor and Head of Year are all willing and able to help.

In your Personal Development lessons you will be spending time going through the option process and will have lots of opportunities to consider all the possible choices you need to make.

When you, your parents and your teachers are satisfied you have understood what you want to choose then you will complete an **online** option form. **The link for this will be sent to your parents in March.**

**All option forms must be completed by
Friday 24th March**

**Please make sure that you complete all of the form and that
you have two reserve choices.**

**Once you have made your choices you will have the
opportunity to review them in the Summer Term – but you
may not be able to change them.**

**No changes can be made to options choices beyond
the end of September of Year 10**

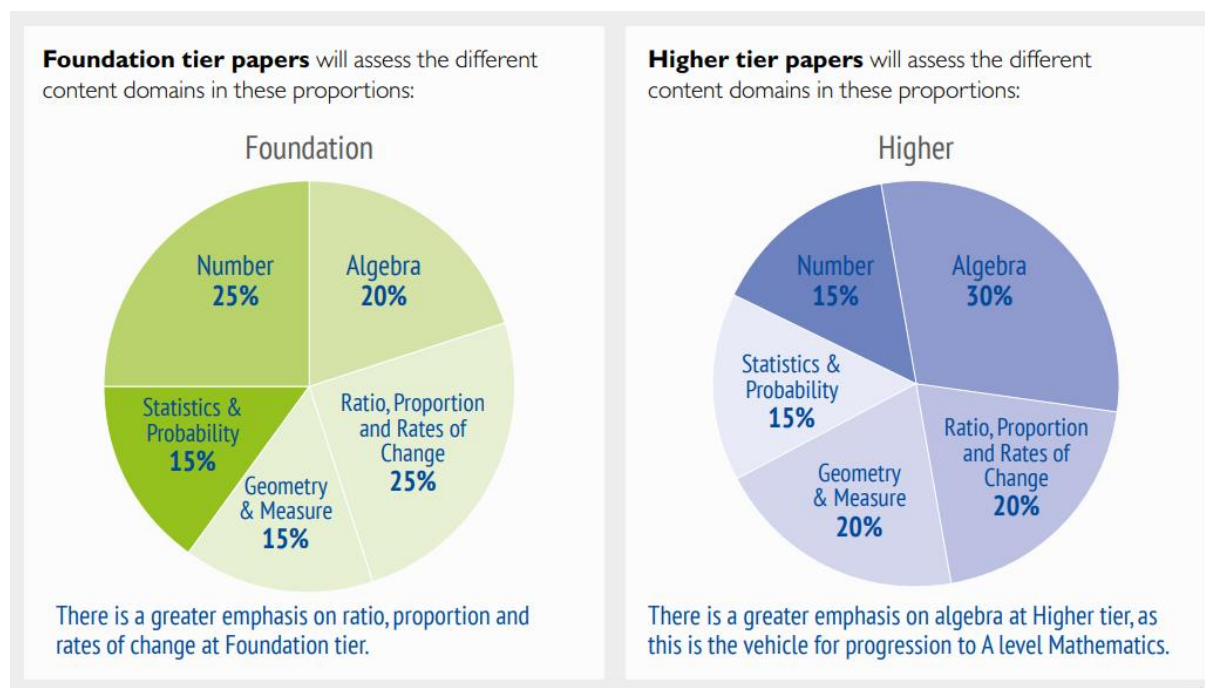
Core Qualifications

These are the subjects
you have to study



English Language and Literature																				
Qualification: Two GCSEs		Exam Board: Edexcel (<u>Language</u> and <u>Literature</u>)																		
English Language <ul style="list-style-type: none"> • How to read and analyse fiction and non-fiction texts. • How to write imaginative and transactional texts for different audiences and purposes. • How to develop speaking and listening skills. 																				
English Literature <ul style="list-style-type: none"> • How to analyse texts looking at the writer's craft. • How to interpret texts considering historical and authorial context • The Literature texts you will study are: Animal Farm, Macbeth, A Christmas Carol. • Selected poems from an anthology. 																				
Assessment: 100% examination at the end of the course. <ul style="list-style-type: none"> • English Language – Paper 1: Fiction and Imaginative Writing – 40% of overall mark – 1 hour 45 mins • English Language – Paper 2: Non-fiction and Transactional Writing – 60% of overall mark – 2 hours 5 mins • English Literature – Paper 1: Shakespeare and Post 1914 Literature – 1 hour 45 mins • English Literature – Paper 2: 19th Century Novel and Poetry since 1789 – 2 hours 15 mins 																				
Some of the careers that use English: <table> <tr> <td>Actor</td><td>Digital marketing officer</td><td>Radio broadcast assistant</td></tr> <tr> <td>Advertising copywriter</td><td>Early years teacher</td><td>Sales administrator</td></tr> <tr> <td>Arts administrator</td><td>Librarian</td><td>Screenwriter</td></tr> <tr> <td>Commissioning editor</td><td>Marketing executive</td><td>Teacher</td></tr> <tr> <td>Computer games developer</td><td>Newspaper journalist</td><td>Speech and language therapist</td></tr> <tr> <td>Crown prosecutor</td><td>Paralegal</td><td>Vlogger</td></tr> </table>			Actor	Digital marketing officer	Radio broadcast assistant	Advertising copywriter	Early years teacher	Sales administrator	Arts administrator	Librarian	Screenwriter	Commissioning editor	Marketing executive	Teacher	Computer games developer	Newspaper journalist	Speech and language therapist	Crown prosecutor	Paralegal	Vlogger
Actor	Digital marketing officer	Radio broadcast assistant																		
Advertising copywriter	Early years teacher	Sales administrator																		
Arts administrator	Librarian	Screenwriter																		
Commissioning editor	Marketing executive	Teacher																		
Computer games developer	Newspaper journalist	Speech and language therapist																		
Crown prosecutor	Paralegal	Vlogger																		

Maths		
Exam Board: <u>AQA</u>		Exam Board: AQA
You will study: <ul style="list-style-type: none">• Number: between 15-25% of the assessment.• Ratio, Proportion and Rates of Change: between 20-25% of the assessment.• Algebra: between 20-30% of the assessment.• Geometry and Measure: between 15-20% of the assessment.• Statistics and Probability: 15% of the assessment.		
Assessment: <p>100% examination at the end of the course.</p> <p>Paper 1: non-calculator – 33 1/3 % of overall mark - 1 hour 30 mins</p> <p>Paper 2: calculator – 33 1/3 % of overall mark - 1 hour 30 mins</p> <p>Paper 3: calculator - 33 1/3 % of overall mark - 1 hour 30 mins</p>		
Some of the careers that use Maths:		
Accountant	Credit controller	Software designer
Acoustics consultant	Criminologist	Stockbroker
Actuary	Data analyst	Tax advisor
Aerospace engineer	Electrical engineer	Teacher
Air traffic controller	Financial advisor	
Bank manager	Meteorologist	
Civil engineer	Research scientist	



Combined Science / Separate Sciences	
Qualification: Two or three GCSEs Foundation Tier: Grades 1-5 Higher Tier: Grades 4-9	Exam Board: Edexcel (<u>Combined Science</u> and <u>Biology</u> , <u>Chemistry</u> and <u>Physics</u>)
Biology	
<u>Paper 1</u> <ul style="list-style-type: none"> Overarching concepts in Biology Cells and control Genetics Natural selection and genetic modification Health, disease and development of medicines 	<u>Paper 2</u> <ul style="list-style-type: none"> Overarching concepts in Biology Plant structures and their functions Animal coordination, control and homeostasis Exchange and transport in animals Ecosystems and material cycles
Chemistry	
<u>Paper 1</u> <ul style="list-style-type: none"> Overarching concepts in Chemistry States of matter Methods of separating and purifying substances Acids Obtaining and using metals Electrolyte processes Reversible reactions and equilibria Transition metals, alloys and corrosion* Quantitative analysis* Dynamic equilibria calculations* Chemical cells and fuel cells* 	<u>Paper 2</u> <ul style="list-style-type: none"> Overarching concepts in Chemistry Group 1, 7 and 0 Rates of reaction Fuels Heat energy changes in chemical reactions Earth and atmosphere science Qualitative analysis tests for ions* Hydrocarbons* Polymers* Alcohols and carboxylic acids* Bulk and surface properties of matter including nanoparticles*
Physics	
<u>Paper 1</u> <ul style="list-style-type: none"> Overarching concepts in Physics Waves Light and the electromagnetic spectrum Particle module 1 Radioactivity Astronomy* 	<u>Paper 2</u> <ul style="list-style-type: none"> Overarching concepts in Physics Energy – forces doing work Forces and their effects Electricity and circuits Static electricity* Magnetism and the motor effect Electromagnetic induction Particle module 2 Forces and matter
*Only applies to Separate Sciences	
Assessment: 100% examination at the end of the course.	
Combined Science:	
Biology 1 – 1 hour 10 mins Chemistry 1 – 1 hour 10 mins Physics 1 – 1 hour 10 mins	Biology 2 - 1 hour 10 mins Chemistry 2 - 1 hour 10 mins Physics 2 - 1 hour 10 mins
Separate Sciences:	
Biology 1 - 1 hour 45 mins Chemistry 1- 1 hour 45 mins Physics 1- 1 hour 45 mins	Biology 2- 1 hour 45 mins Chemistry 2- 1 hour 45 mins Physics 2- 1 hour 45 mins

Some of the careers that use Biology:		
Biomedical scientist Botanist Criminologist Dental nurse Environmental consultant Food scientist Gardener GP	Health visitor Horticultural manager Hospital doctor Microbiologist Nurse Oceanographer Pharmacologist Podiatrist	Speech and language therapist Teacher Vet Zookeeper Zoologist
Some of the careers that use Chemistry:		
Anaesthetist Chemical engineer Chemist Criminologist Dentist Energy engineer Food scientist	Forensic scientist Geotechnician GP Hospital doctor Laboratory technician Materials engineer Minerals surveyor	Nanotechnologist Nurse Oil rig worker Pharmacist Teacher Textile technologist Vet
Some of the careers that use Physics:		
Acoustics consultant Aerospace engineer Architect Broadcast engineer Civil engineer Criminologist	Design and development engineer Electronics engineer Geoscientist IT service engineer Meteorologist Nanotechnologist Nuclear engineer	Oil and gas operations manager Physicist Teacher

Option Choices

These are subjects you
can choose to study



A Specialist Sports College

Geography		
Qualification: GCSE		Exam Board: AQA
<p>You will study:</p> <p>Paper 1</p> <ul style="list-style-type: none"> • The challenge of natural hazards • The living world • Physical landscapes in the UK <p>Paper 2</p> <ul style="list-style-type: none"> • Urban issues and challenges • The changing economic world • The challenge of resource management <p>Paper 3</p> <ul style="list-style-type: none"> • Issue Evaluation • Fieldwork (including two compulsory field trips) 		
<p>Assessment:</p> <p>Three examinations at the end of the course.</p> <p>Paper 1: <i>Living with the Physical Environment</i>. 1 hour 30 mins. (35%)</p> <p>Paper 2: <i>Challenges in the Human Environment</i>. 1 hour 30 mins. (35%)</p> <p>Paper 3: <i>Geographical Application and Skills</i>. 1 hour 15 mins. (30%)</p>		
Some of the careers that use Geography:		
Air cabin crew Archaeologist Cartographer Countryside ranger Diplomatic service officer Drone Pilot Ecologist	Environmental consultant Estates officer Geoscientist Land surveyor Landscape architect Planning and development surveyor	Quantity surveyor Rural surveyor Teacher Tourist guide Town planner Transport planner Travel agent

History		
Qualification: GCSE		Exam Board: <u>Eduqas</u>
You will study: <ul style="list-style-type: none"> • America 1910 - 1929 • Germany 1919 - 1990 • Crime and Punishment 500 - Present Day • Elizabethan Era 1558 – 1603 		
Assessment: Four examinations at the end of the course. Papers 1 and 2 are taken on one day and Papers 3 and 4 on another day. Paper 1: America 1910-1929 (25%) 1 hour and Paper 2: Elizabethan Era (25%) 1 hour. Paper 3: Germany 1919-1990 (25%) 45 minutes and Paper 4: Crime and Punishment (25%) 1 hour 15 minutes.		
Some of the careers that use History:		
Archaeologist Archivist Art gallery curator Broadcast journalist Conservator Editorial assistant	Land and property valuer Librarian Museum curator Proof-reader Public relations officer Solicitor	Sub-editor Teacher Tourist guide Web content manager Writer

French / Spanish		
Qualification: GCSE Foundation Tier: Grades 1-5 Higher Tier: Grades 4-9		Exam Board: Edexcel (<u>French</u> and <u>Spanish</u>)
You will study a range of topics including:		
1. Yourself and Culture: Family, where you live, daily life and customs, celebrations, music, sport, films and television.		
2. Local Area, Holiday, Travel: Holidays, accommodation, eating out, shopping, weather, towns.		
3. School: Subjects, school day, rules and pressures, school trips, school events and school exchanges.		
4. Future Aspirations, Study and Work: Using languages after GCSE, travel, employment, further study, volunteer work, jobs.		
5. International and Global Dimension: What brings the world together, such as sport, music events, campaigns and good causes, environmental issues, such as being ‘green’ and natural resources.		
Assessment:		
<ul style="list-style-type: none">Students will be assessed in the 4 key skills.Each examination makes up 25% of the total marks.The examination papers are tiered Foundation (F) and Higher (H).		
The examinations are:		
Listening	F: 30 mins	OR H: 40 mins
Speaking	F: 7-9 mins	OR H: 10-12 mins
Reading	F: 45 mins	OR H: 1 hour
Writing	F: 1 hour 10 mins	OR H: 1 hour 20 mins
Some of the careers that use Languages:		
Air cabin crew	Immigration officer	Translator
Air traffic controller	Public relations office	Transport planner
Airline pilot	RAF officer	Banking and Finance
Broadcast journalist	Teacher	IT
Events manager	Tour manager	Marketing
Hotel manager	Tourist guide	Engineering

Art		
If you choose Art, you <u>cannot</u> choose Textiles or 3D Design		
Qualification: GCSE		Exam Board: <u>OCR</u>
You will study: <ul style="list-style-type: none"> • How to use historical, cultural, and contemporary research into craftspersons, artists, and designers to give deeper meaning to your work • How to develop creative and unique ideas • How to use a wide range of Fine Art media, techniques, and processes to explore and experiment including painting, mono-Printing, and drawing • How to plan for and create personal outcomes • How to be an independent creative of the future! 		
Assessment: <ul style="list-style-type: none"> • Projects run just like KS3 in structure (using four Assessment Objectives which allow you to showcase your skills across a broad range) you will undertake similar tasks, but with very different themes that you have chosen yourself! • The course is 100% NEA (work you do in a supervised environment – which could be in your classroom or, for example, on a field trip). • The course is split into two parts – Unit 1: Portfolio (a project developed by yourself worth 60% of your GCSE) Unit 2: Externally Set Task (a project developed from the exam board list of themes worth 40% of your GCSE) • At the end of Unit 2 you will have a 10 hour practical exam period (split over two days) to create your final piece. 		
Some of the careers that use Art:		
Advertising art director Animator Architect Art gallery curator Art therapist Fashion designer	Graphic designer Landscape Make-up artist Museum curator Photographic stylist Play therapist	Prop maker Set designer Teacher TV or film director Visual merchandiser Web content manager

Textiles		
If you choose Textiles, you <u>cannot</u> choose Art or 3D Design		
Qualification: GCSE		Exam Board: <u>OCR</u>
You will study: <ul style="list-style-type: none">• How to use historical, cultural, and contemporary research into craftspersons, artists, and designers to give deeper meaning to your work• How to develop creative and unique ideas• How to use a wide range of Textiles media, techniques, and processes to explore and experiment• How to plan for and create personal outcomes• How to be an independent creative of the future!		
Assessment: <ul style="list-style-type: none">• Projects run just like KS3 in structure (using four Assessment Objectives which allow you to• showcase your skills across a broad range) you will undertake similar tasks, but with very different themes that you have chosen yourself!• The course is 100% NEA (work you do in a supervised environment – which could be in your classroom or, for example, on a field trip).• The course is split into two parts – Unit 1: Portfolio (a project developed by yourself worth 60% of your GCSE) Unit 2: Externally Set Task (a project developed from the exam board list worth 40% of your GCSE).• At the end of Unit 2 you will have a 10 hour period (split over two days) to create your final piece.		
Some of the careers that use Textiles:		
Advertising art director Art editor Clothing alteration specialist Conservator Costume designer Industry Inspector	Design and development engineer Fashion designer Footwear designer Furniture designer Image consultant Interior design Stage and Set Design	Jewellery designer Magazine journalist Retail buyer Teacher Textiles Technologist Material Innovation

3D Design		
If you choose 3D Design, you <u>cannot</u> choose Art or Textiles		
Qualification: GCSE		Exam Board: <u>OCR</u>
You will study: <ul style="list-style-type: none"> • How to use historical, cultural, and contemporary research into craftspersons, artists, and designers to give deeper meaning to your work • How to develop creative and unique ideas • How to use a wide range of 3D media, techniques, and processes to explore and experiment including technical studies, using hand tools, and CAD • How to plan for and create personal outcomes • How to be an independent creative of the future! 		
Assessment: <ul style="list-style-type: none"> • Projects run just like KS3 in structure (using four Assessment Objectives which allow you to showcase your skills across a broad range) you will undertake similar tasks, but with very different themes that you have chosen yourself! • The course is 100% NEA (work you do in a supervised environment – which could be in your classroom or, for example, on a field trip). • The course is split into two parts – Unit 1: Portfolio (a project developed by yourself worth 60% of your GCSE) Unit 2: Externally Set Task (a project developed from the exam board list of themes worth 40% of your GCSE) • At the end of Unit 2 you will have a 10 hour practical exam period (split over two days) to create your final piece. 		
Some of the careers that use 3D Design:		
Aerospace engineer Architect Automotive engineer Biotechnologist Chemical engineer Civil engineer	Electrical engineer Ergonomist Furniture designer Heating and ventilation engineer Interior designer	Jewellery designer Manufacturing systems engineer Mechanical engineer Robotics engineer Teacher

Food Preparation and Nutrition		
Qualification: GCSE		Exam Board: AQA
You will study: <ul style="list-style-type: none"> • Food nutrition and health • Food science • Food safety • Food choice • Food provenance 		
Assessment: <ul style="list-style-type: none"> • Food preparation and nutrition theoretical knowledge: Written exam: 1 hour 45 minutes 50% of GCSE Multiple choice questions (20 marks) Five questions each with a number of sub questions (80 marks) • Food preparation and nutrition practical knowledge and skill: Non exam assessment: NEA 1 - Food Investigation (35%) NEA 2 – Food Preparation (15%) 		
Some of the careers that use Food and Nutrition:		
Agricultural engineer Baker Barista Butcher Catering manager	Chef Farmer Food factory worker Food manufacturing inspector Food scientist	Hotel manager Nutritional therapist Packaging technologist Restaurant manager Teacher

PE		
Qualification: GCSE		Exam Board: <u>Edexcel</u>
<p>You will study: The course is split into four main units: Component 1- Theory – Fitness and body systems = 36%. Applied Anatomy and Physiology; 2. Movement Analysis; 3. Physical Training. These topics are then broken down into sub modules – see PE for more information. Component 2- Theory – Health and performance = 24%. Health, Fitness and Wellbeing; 2. Sport Psychology; 3. Socio-cultural Influences. Component 3- Practical Performance = 30%. You are assessed in three different sports (one must be a team sport and one must be an individual sport). Component 4- Personal Exercise Programme coursework = 10%. This is a 6 week training programme. It is designed by students in order to improve fitness and performance in a sport. They have to plan, complete and then evaluate the programme.</p>		
<p>Assessment: Components 1 and 2 (Theory) The whole 60% is assessed by 2 written exams. The exams are at the end of year 11.</p> <p><u>Component 1</u> exam is <u>1 hour 30min</u> long and is 80 marks (36% of your final grade).</p> <p><u>Component 2</u> exam is <u>1 hour 15 min</u> long and is 60 marks (24% of your final grade).</p> <p><u>Component 3</u> 30% is an assessment of how well you can perform in three sports. These will be assessed firstly in lessons and then officially in a <u>practical exam</u> week during year 11. An external moderator will assess you during this week. Please note that we will assess you in more than four sports over the course BUT we will pick your best three to go forward for assessment.</p> <p><u>Component 4</u> 10% is coursework. The coursework is a controlled assessment—this means it happens in school with the classroom teacher but in exam style conditions. The coursework is called a Personal Exercise Programme. You plan, complete and analyse a training programme designed to improve your own fitness.</p>		
Careers that use PE / Sport		
Events manager Health trainer Leisure centre manager Lifeguard Outdoor activities instructor	Personal trainer Physiotherapist Play therapist Sport psychologist Sports coach	Sports commentator Sports development officer Sports scientist Teacher

Music		
If you choose Music, you will study one of these qualifications (the choice of which will be made at a later date)		
Qualification: GCSE		Exam Board: <u>Edexcel</u>
You will study: Unit1: Performing Music Unit 2: Composing Music Unit 3: Music - Appraising		
Assessment: <ul style="list-style-type: none">Performing Consisting of a number of ensemble and solo performances This unit is internally assessed. <ul style="list-style-type: none">Composing Music Two compositions (one free composition and one set by Edexcel) This unit is internally assessed. <ul style="list-style-type: none">Music Listening and Appraising Pupils will study 8 set works. There will be a final written paper at the end of the course lasting 1 hour 45 minutes. The set works are split into 4 Areas of Study. This unit is externally assessed.		
Qualification: BTEC Tech Award in Music Practice		Exam Board: Edexcel
You will study: Component 1: Exploring Music Products and Styles. Component 2: Music Skills Development Component 3: Responding to a Music Brief		
Assessment: <ul style="list-style-type: none">Components 1 and 2 are assessed through the completion of Pearson set assignments that are internally assessed and then moderated by PearsonComponent 3 is a synoptic assessment that is externally assessed by Pearson.		
Careers that use Music:		
Session Musician Sound technician Singer Broadcast engineer Community arts worker Instrumentalist	Computer games developer Dancer DJ Events manager Music therapist Talent Scout	Musical instrument maker Singer/songwriter Studio sound engineer Teacher TV / film sound technician Musical production

Drama		
Qualification: GCSE		Exam Board: OCR
<p>You will study:</p> <ul style="list-style-type: none"> • A range of theatrical skills and ways in which to devise from a stimulus. • Two extracts from one play text with the intention of presenting a showcase of these extracts. • Practical exploration and analysis of one play text to answer questions on in a written exam. • Analysis and evaluation of live theatre. 		
<p>Assessment:</p> <p><i>Devising Drama (30%)</i> A non-exam assessment where you devise from a stimulus.</p> <p><i>Presenting and Performing Texts (30%)</i> A non-exam assessment with a visiting examiner to assess performances of monologues, duologues and group pieces.</p> <p><i>Drama: Performance and Response (40%)</i> Exam assessment (1 hour 30 minutes)</p> <p>Performing in front of an audience is a compulsory part of this course. If you choose this option, you need to be confident in this aspect of the subject.</p>		
Careers that use Drama:		
Actor Arts administrator Digital marketing officer Dramatherapist Entertainer	Events manager Image consultant Lighting technician Media researcher Screenwriter	Set designer Social media manager Teacher Tour manager TV / film producer

ICT		
Qualification: Cambridge National Level 1/2		Exam Board: <u>OCR</u>
<p>You will study:</p> <p><u>IT in the Digital world</u></p> <ul style="list-style-type: none"> • Principles of human computer interfaces • The uses of Internet of Everything and the application of this in everyday life • Cyber-security and legislations related to the use of IT systems <p><u>Data Manipulation</u></p> <ul style="list-style-type: none"> • Plan and design a spreadsheet solution to meet client requirements • Evaluate their solution based on the user requirements. <p><u>Using augmented reality to present information</u></p> <ul style="list-style-type: none"> • Learn the purpose, use and types of augmented reality (AR) • Develop the skills to be able to design and create an AR model prototype, using a range of tools and techniques 		
<p>Assessment:</p> <p>Data Manipulation using spreadsheets Internally assessed tasks (30%)</p> <p>Using AI to present information Internally assessed tasks (30%)</p> <p>IT in the digital world (40%) Exam assessment (1 hour 30 minutes)</p>		
Careers that use ICT:		
Teacher IT Manager IT Sales assistant Cyber security Analyst Project Manager	IT Support Assistant Database Administrator Web developer Network Administrator Software Engineer	Data Scientist Cloud Engineer Robotics Engineer Computer Hardware Engineer

Computer Science		
Qualification: GCSE (9-1)		Exam Board: <u>OCR</u>
You will study: <ul style="list-style-type: none"> • Systems Architecture • Memory and Storage • Wired and wireless networks • Network topologies, protocols, and layers • System security and System software • Ethical, legal, cultural, and environmental concerns • Algorithms, programming techniques and producing robust programs • Computational logic • Translators and facilities of languages • Data representation • Practical Investigations 		
Assessment: <p>Computer Systems (50%) Exam assessment (1 hour 30 minutes)</p> <p>Computational thinking, algorithms and programming (50%) Exam assessment (1 hour 30 minutes)</p>		
Careers that use Computing		
App developer Automotive engineer Broadcast engineer Business Administrator Computer games developer Criminal intelligence analyst	Cyber intelligence officer Data analyst Electronics engineer Information scientist IT project manager IT service engineer	IT technician Software developer Systems analyst Teacher Web designer Web developer

Citizenship		
Qualification: GCSE		Exam Board: <u>Edexcel</u>
<p>You will study:</p> <p><u>Theme A: Living together in the UK</u></p> <ul style="list-style-type: none"> Community, identity and changing population Political, legal and human rights Discrimination and the law <p><u>Theme B: Democracy at Work in the UK</u></p> <ul style="list-style-type: none"> How we are governed Power and politics How laws are made <p><u>Theme C: How the Law works</u></p> <ul style="list-style-type: none"> The role of the law in our society The Criminal Justice System <p><u>Theme D: Power and Influence</u></p> <ul style="list-style-type: none"> The EU, UN, WTO, Commonwealth and NATO Taking part in democracy The role of the media <p><u>Theme E: Taking a Citizenship Action</u></p> <ul style="list-style-type: none"> Researching an issue, planning and carrying out a campaign 		
<p>Assessment:</p> <ul style="list-style-type: none"> There are 2 exams at the end of the course. Both are 1hr 45 minutes long. They are worth 100% of the GCSE. <p>Students will take part in a Citizenship campaign which is examined in Paper 2</p>		
Careers that use Citizenship:		
Barrister Broadcast journalist Civil service officer Diplomatic service officer Human resources manager	Market researcher MP Newspaper journalist Paralegal Public relations officer	Solicitor Stockbroker Teacher Youth offending team officer